

1N5812 thru 1N5816

Features

- Full threads within 2 1/2 threads
- Standard Polarity : Stud is Cathode

Maximum Ratings

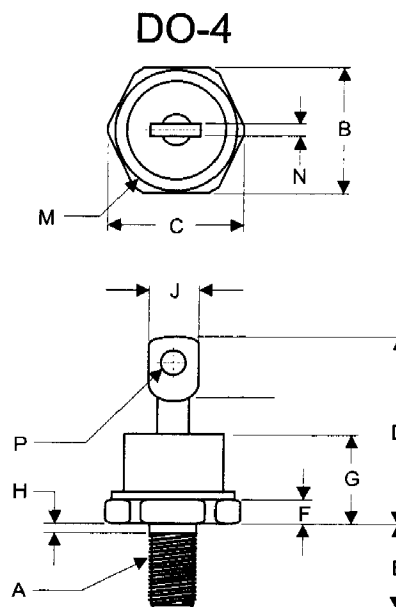
- Operating Junction Temperature: -65°C to +175°C
- Storage Temperature: -65°C to +175°C

| MCC Part Number | Maximum Recurrent Peak Reverse Voltage | Maximum RMS Voltage | Maximum DC Blocking Voltage |
|-----------------|--|---------------------|-----------------------------|
| 1N5812 | 50V | 35V | 50V |
| 1N5813 | 75V | 52.5V | 75V |
| 1N5814 | 100V | 70V | 100V |
| 1N5815 | 125V | 87.5V | 125V |
| 1N5816 | 150V | 105V | 150V |

Electrical Characteristics @ 25°C Unless Otherwise Specified

| | | | |
|---|-------------|--------------|---|
| Average Forward Current | $I_{F(AV)}$ | 20 A | $T_C = 100^\circ\text{C}$ |
| Peak Forward Surge Current | I_{FSM} | 400A | 8.3ms, half sine |
| Maximum Instantaneous Forward Voltage | V_F | .89V .97V | $I_{FM} = 10\text{A}; T_j = 25^\circ\text{C}$ $I_{FM} = 20\text{A}; T_j = 25^\circ\text{C}$ |
| Maximum DC Reverse Current At Rated DC Blocking Voltage | I_R | 10uA 1mA | $T_j = 25^\circ\text{C}$ $T_j = 100^\circ\text{C}$ |
| Maximum Reverse Recovery Time | T_{rr} | 45nS | $I_F = I_R = 1.0\text{A dc}$ $I_{(REC)} = 0.1\text{A}$ $di/dt = 85\text{ A / } \mu\text{S}$ |

20 Amp Ultra Fast Recovery Rectifier 50 to 150 Volts



| | 10-32 UNF3A | Threads | Standard | Polarity |
|---|-------------|---------|----------|----------|
| A | — | — | — | — |
| B | .424 | .437 | 10.77 | 11.10 |
| C | — | .505 | — | 12.82 |
| D | .600 | .800 | 15.24 | 20.32 |
| E | .422 | .453 | 10.72 | 11.50 |
| F | .075 | .175 | 1.91 | 4.44 |
| G | — | .405 | — | 10.29 |
| H | .163 | .189 | 4.16 | 4.80 |
| J | — | .310 | — | 7.87 |
| M | — | .350 | — | 8.89 |
| N | .020 | .065 | .51 | 1.65 |
| P | .060 | .100 | 1.53 | 2.54 |

